

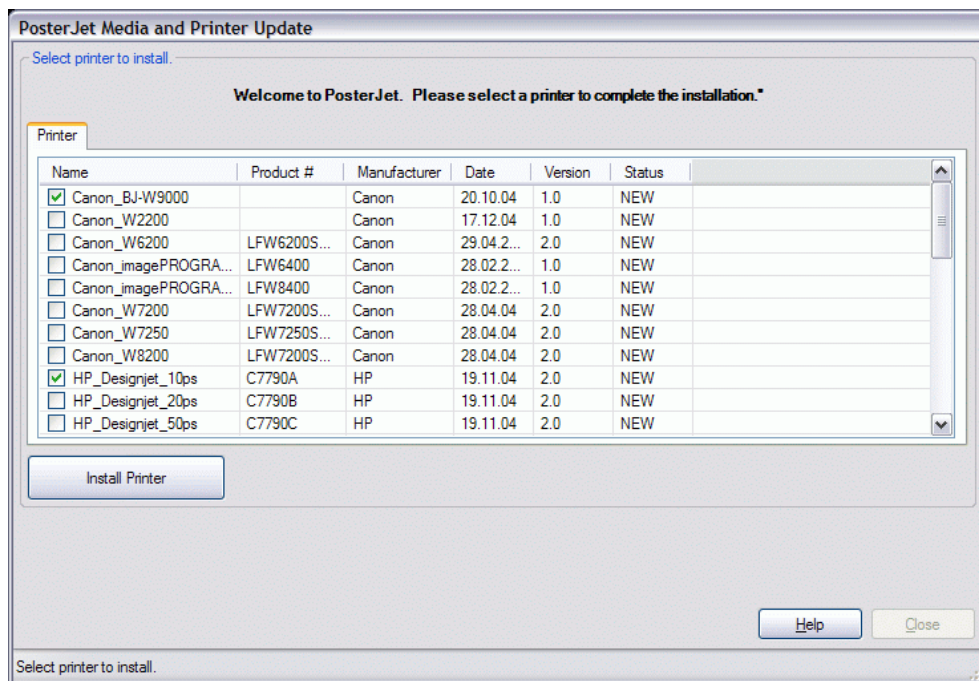
Installation of PosterJet updates

In order to provide small update files and a small downloadable PosterJet version, the compressed ZIP-file of the program installation does contain only a selection of printers and media files.

Installation of printers and media profiles

After the PosterJet installation procedure you may install the desired printers and their respective media.

On the first program start of PosterJet after the installation a dialog appears, that provides the installation of supported printers.



After a short time of refreshing the list all available printers are displayed. Choose the desired printers by selecting them with the checkboxes and click on "Install printer". the selected printers and their media profiles will now be installed automatically by PosterJet.

During the installation of the desired printers all respective media is installed too. After the successful installation close the update window by clicking on the "Close" button.

Afterwards choose the desired printer from the program preferences of PosterJet. The installation is now completed.

