

## PosterJet 7 PPD installation on Mac OS X

If PosterJet 7 is installed on a Windows-based PC, you can send documents from any application and from any Macintosh OS X computer\* within the network neighborhood as complete print job directly into the PosterJet main queue.

### Procedure

The Macintosh PPD files are located in the folder "PPD" on the PosterJet 7 installation CD. The files are compressed with Stuffit. To uncompress the PPD files on a computer with OS X operating system, simply double click the file "Mac PPD 7 ENGLISH.sit" and unpack the files to your local hard drive.

Now open the folder "Applications" and then the sub-folder "Utilities" by using the OS X system folder.

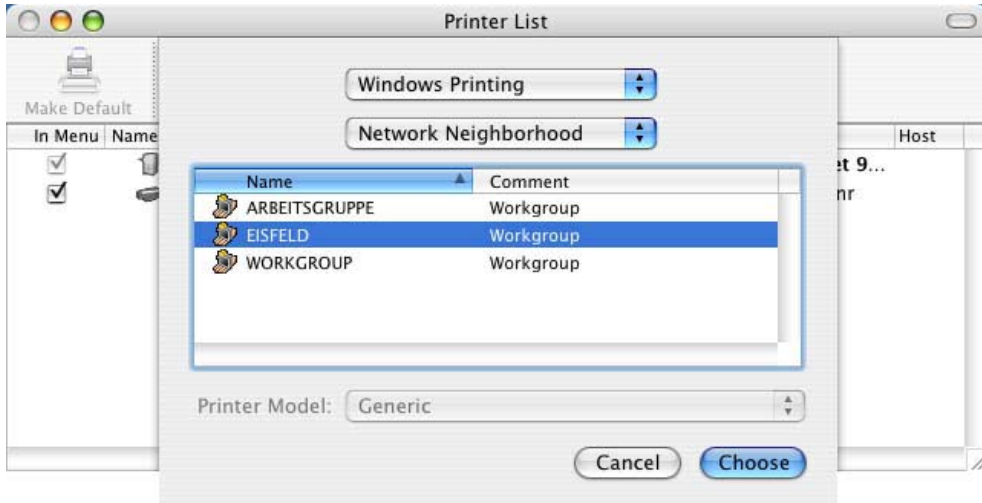
Then start the "Printer Setup Utility".

Click on the button "Add" and choose the "Windows" printers as first option from the printer list.



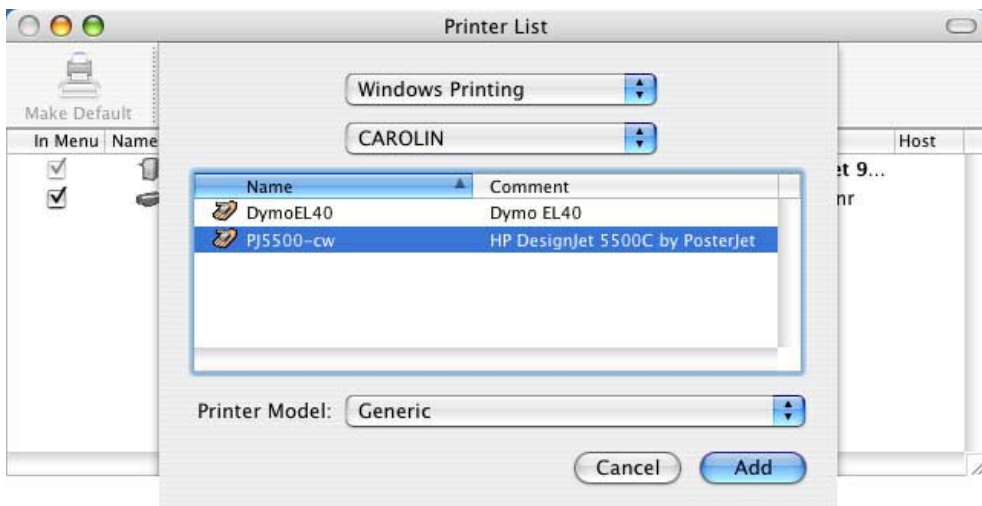
Picture 1: Printer utility tool with printer list

As second option please select the "Network Neighborhood" and choose the network that contains the enabled PosterJet 7 Windows printer.\*\*



Picture 2

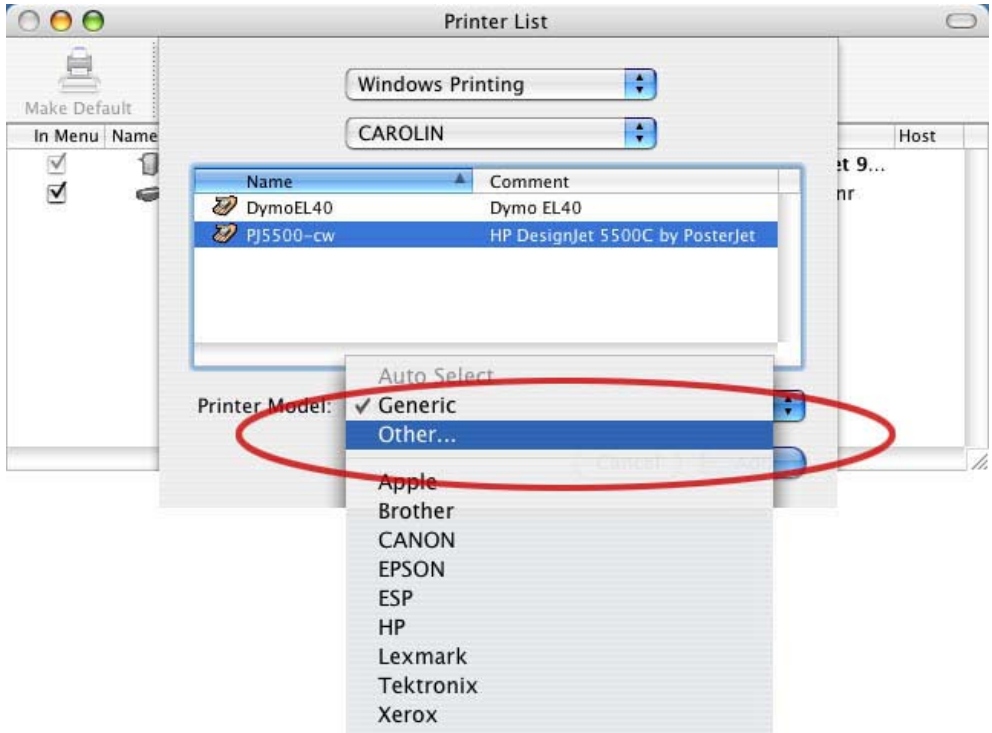
In our example, the enabled Windows printer is located in the workgroup "Eisfeld" on the computer named "CAROLIN".



Picture 3: Selecting the enabled virtual PosterJet printer within the Windows network.

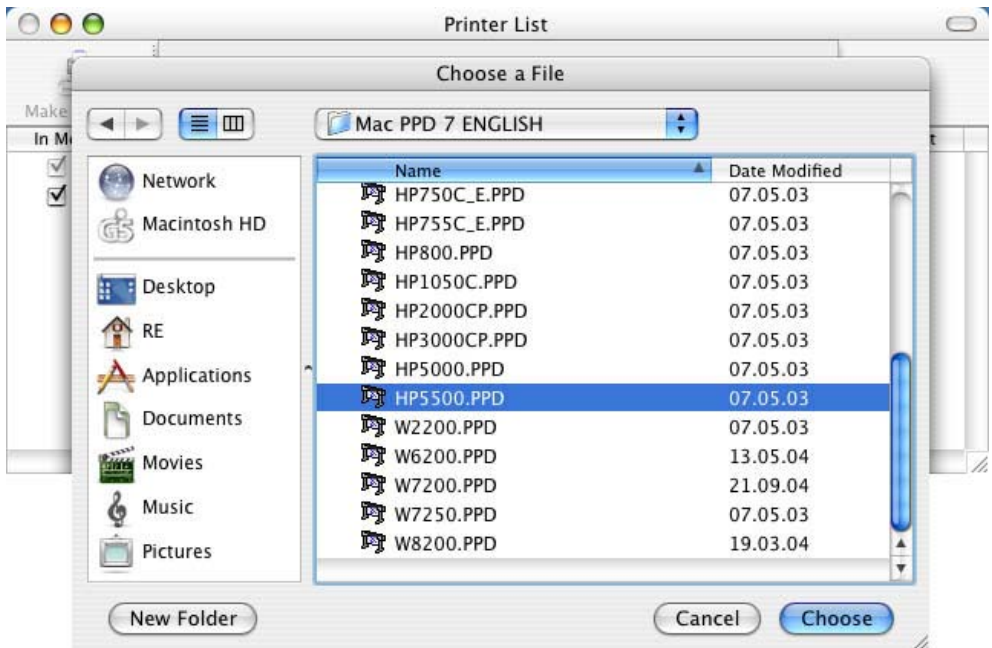
In our example the enabled name of the virtual PosterJet Windows printer is: PJ5500 cw

Now choose this printer (with a single mouse click) and select the option "Other..." from the "Printer Model" list.



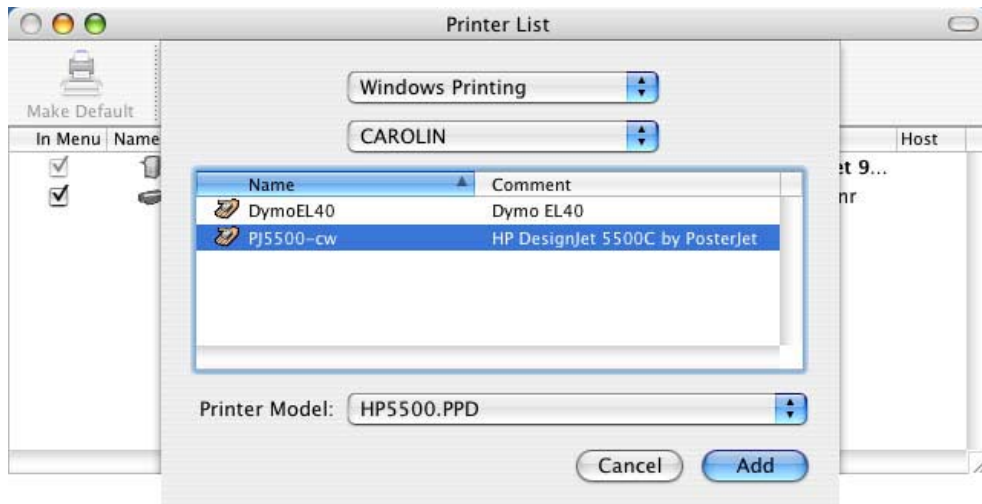
Picture 4: Dialog window "Printer List"

In the following dialog, please choose the PosterJet Mac OS X PPD for your printer and confirm your selection with "Choose". In our example, it is the PPD for the HP DesignJet 5500 named "HP5500.PPD"



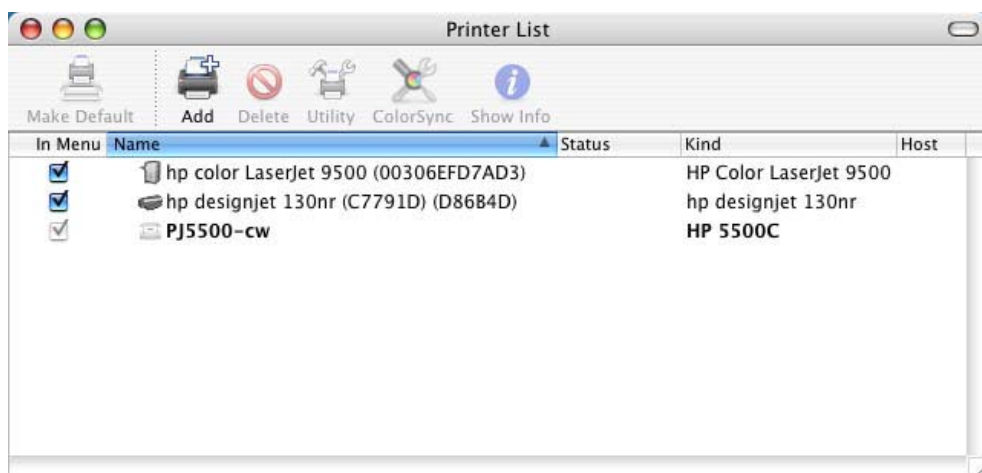
Picture 5: Selection of the PPD from a local hard drive.

Finish the procedure by selecting the button "Add"



Picture 6: Selection of the proper PPD

If the installation of the virtual PosterJet printer in OS X was successful, the printer appears in the printer list.



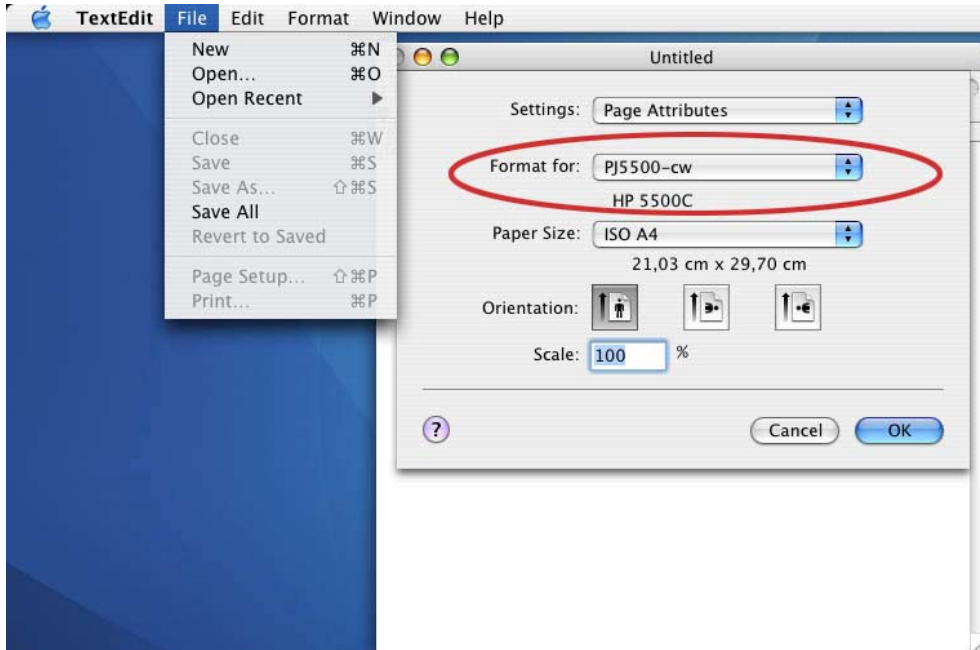
Picture 7: The updated printer list

The new PosterJet printer is now available for your Macintosh applications.

### Example

As example for the successful print of a document from within a Mac OS X application, we select a document from the "TextEdit" application.

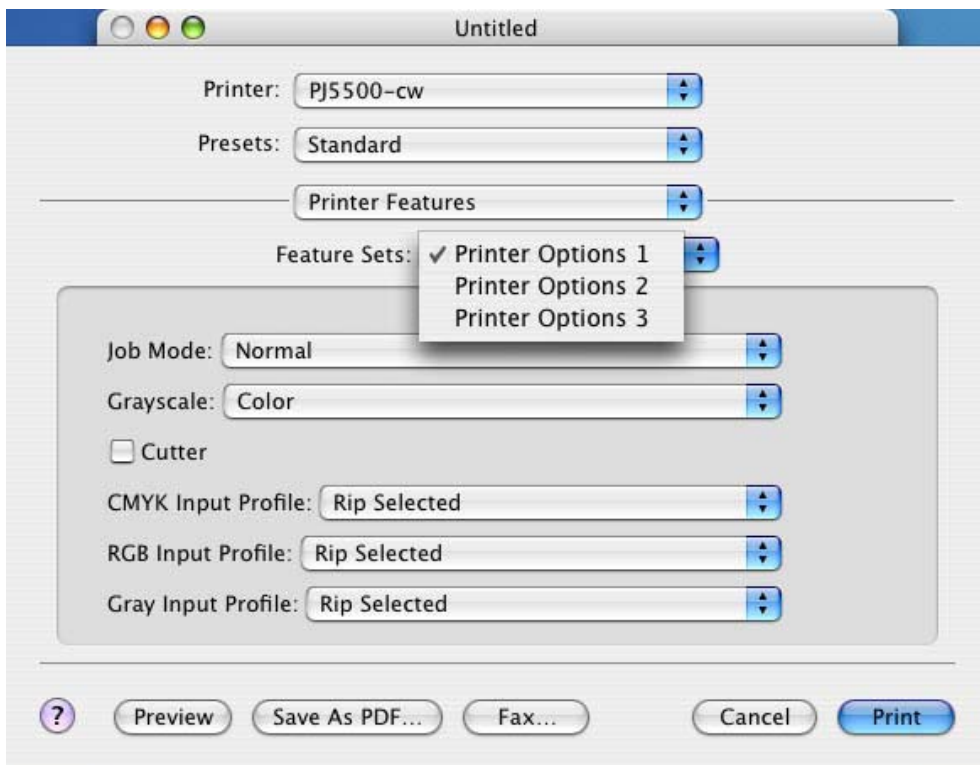
First, we create a sample document in TextEdit. In the new document, we choose the menu entry "Page Setup..." from the "File" menu.



Picture 8: Settings in the "Page Setup" menu

In the option "Format for..." we defined for which printer we want to change the settings. After selecting the paper size, we confirm this dialog by clicking on "OK".

Now we choose the menu entry "Print" from the "File" menu. In the section "Printer Features" the PosterJet specific settings like Cutter, Tiling, Crop marks, color settings, etc. can be found.



Picture 9: Print options

After setting of all necessary options, we can send the print job to PosterJet by selecting the button "Print".

\* For OS 9 computers within the network neighborhood please read the document: Installation of PosterJet 7 PPD's on Mac OS 9

\*\* For questions regarding the installation of a virtual PosterJet 7 printer on a PC, where PosterJet is running, please read the following document: PPD\_install\_EN.pdf

---

© Copyright Eisfeld Datentechnik GmbH & Co. KG 2004