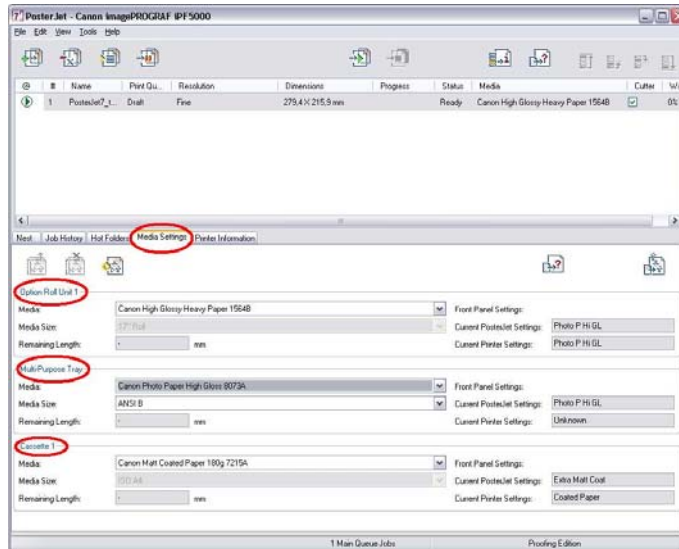


Media selection for the Canon iPF-series

How to choose the right media source when working with the new Canon imagePROGRAF iPF500, iPF600 and iPF5000?

The new Canon imagePROGRAF printers of the iPF series 500, 600 and 5000 provides you with 3 different trays to load media (Roll Unit 1, Multi Purpose Tray and Cassette).

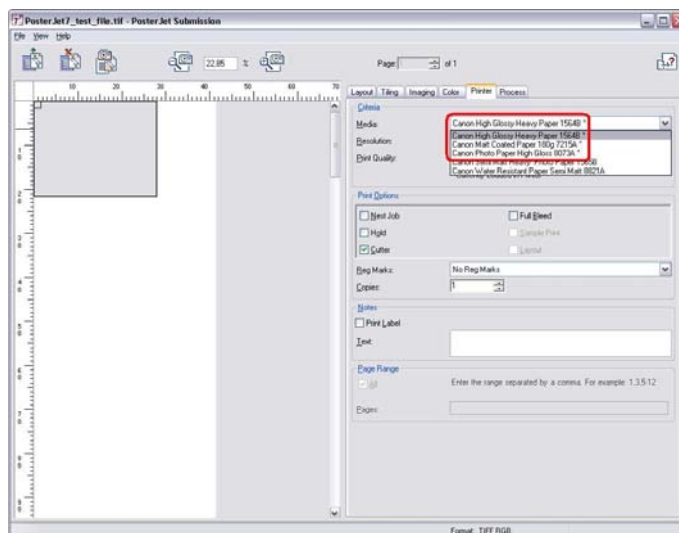


You can select a single media profile in the tab "Media Settings" of the PosterJet main window for all three media trays. If you have selected a media profile for all three trays, all new jobs that will be added to the queue will automatically be set to the media loaded in the "Roll Unit 1".

If only for one tray a media profile is selected (the other ones stay "Unloaded"), all new jobs will of course be set to this media.

If for two or three trays inside the "Media Settings" tab profiles have been selected, PosterJet takes the profile selected for the top loaded tray as default and all new jobs will be set to this media.

You can change the media a job is set to, by selecting another media type in the tab "Printer" - field "Media" of the job submission window. The media profiles that are selected inside one of the trays are shown with a star at the end of the name.



Attention: Not all media types support the printing to a media loaded in the cassette tray. Please have a look into the printers manual for more information.