

Intelligent RIP Software for Canon, Epson, and HP LF-printers

PosterJet 8 is an intelligent printing solution for Canon, Epson, and HP Large-Format Printers. As one of the fastest and most productive RIPs on the market, PosterJet combines ease of use with exceptional output quality. State of the art client/server architecture ensures PosterJet is reliable, as well as adaptable to every professional workflow.

SimuPrint™

This new PosterJet technology enables you to print various jobs on up to five identical or different Large-Format Printers at the same time. Especially print service providers benefit strongly from the enhanced productivity when printing to multiple printers.

High quality output

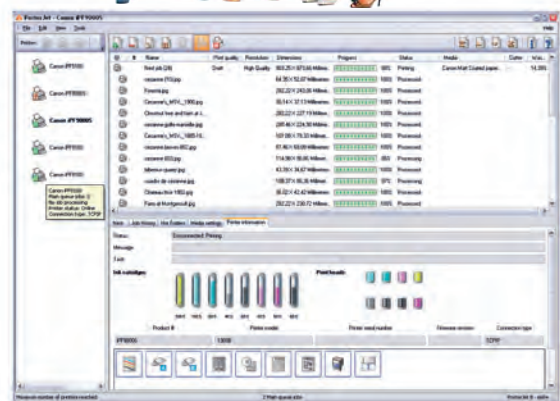
PosterJet's professional colour management offers excellent output quality and maximum gamut across all media. The PosterJet Live Update Service offers the latest media profiles for a wide selection of genuine and 3rd party media.

InstantPrint™

Guarantees printing to commence within seconds, irrespective of file size, file format or PostScript complexity. This unique line-by-line printing technology ensures you use your time productively while you are able to control the output within seconds after job submission.

Unrivalled usability

PosterJet offers easy, error-free production. Simplicity comes courtesy of an intuitive user interface, automated workflow features, bi-directional printer information and a sophisticated error management system. In addition, all job settings are displayed in a highly sophisticated print preview that shows exactly what the print is going to look like. PosterJet works with real What You See Is What You Get technology!



Compatible to
any current
Windows OS
(32Bit + 64Bit)

Future-proof
via sophisticated
plug-in
technology

Expandable
with optional
modules

PDF- and
PostScript
support

HPGL/2
HP-RTL
support

Job submission
via Client,
PPD or Hot Folder

Unlimited
printing
length

- Save media with PosterJet's elaborated onboard nesting feature
- Save money by printing on up to five printers simultaneously from a single PC
- Save time with PosterJet's unique InstantPrint line-by-line technology

Specification

Overview functionality by Edition (excerpt)	e24/e24 PS	e44/e44 PS	e60+/e60+ PS
Client / Server architecture	■	■	■
Maximum printing width ¹	24 inch	44 inch	60 inch +
PostScript support (PS, PDF, EPS, PRN) ²	■	■	■
HPGL/1, HPGL/2 and HP-RTL support	■	■	■
200+ raster image support (e.g. TIFF, JPG, BMP, PCX...)	■	■	■
Canvas bordermaker incl. preview and scaling	■	■	■
Simultaneously active printers included	1	1	1
Additional SimuPrint™ licences	□	□	□
InstantPrint™ provides immediate print start	■	■	■
Client workstations included	2	2	5
Additional client licences	□	□	□
Nesting algorithms to save media	■	■	■
Tiling for XXL prints	□	□	■
Hot Folders for automatized production	□	□	■
Job History for one-click job reprints	□	□	■
Media Manager	■	■	■
Support for measurement devices (e.g. X-Rite, Barbieri, Gretag)	■	■	■
Max Gamut Technology extreme colours	■	■	■
PosterJet Live Printer- and Media Update	■	■	■
IntelliLin™ Technology (starts printing after 7 seconds)	■	■	■
Linearization module (with new EvoLin™ Technology)	■	■	■
Professional profiling module	□	□	□
Precision printing for Canon iPF-printers	■	■	■
Swatchbook maker for RGB, CMYK or Lab colors	■	■	■
Bi-directional printer communication	■	■	■
Extended interactive preview (WYSIWYG)	■	■	■
Scaling and cropping via mouse	■	■	■
FOGRA compliant ICC color managment	■	■	■
Free media profiles	■	■	■
Nest editor with repositioning feature	■	■	■
Localized interface (20 languages available)	■	■	■
Template editor and manager	■	■	■
Spot color database and editor	■	■	■
Automatic file format recognition	■	■	■
Automatic color space recognition	■	■	■
PPD support to print from application ²	■	■	■
Multiple ICC profile support within one nest	■	■	■
Multiple ICC profile support within one file	■	■	■
Job scaling to pre-defined page sizes	■	■	■
Borderless printing ³	■	■	■
Interpolation, sharpening, anti-aliasing	■	■	■
Layout printing for multiple copies	■	■	■
Support for Canon iPF special features	■	■	■
Printer search with IP- and ink recognition	■	■	■
Job submission with extended edit features	■	■	■
Fully upgradable	■	■	■

■ standard □ optional

¹ 60" edition is not limited in printing width and ready for printers above 60".

² Only available in PS editions of PosterJet, optional for non-PS editions.

³ Depends on media features.

System requirements: CPU: Pentium IV, 3 GHz. Memory: 2 GB RAM. Hard disc: 40 GB available.
DVD-ROM drive, 100 MBit Network card / USB 2.0, Operating Systems: Microsoft Windows* XP SP3,
Vista, 7, 8, Server 2003, Server 2008, Server 2012, Mac OS 10.4 (Client only).

* Required: MS .NET Framework 3.5, PostgreSQL Engine, Visual C++ Runtime Libraries (automatically installed, if not available)



e24 / e24 PS

Supports large-format printers with up to 24" (610 mm) printing width

e44 / e44 PS

Supports large-format printers with up to 44" (1118 mm) printing width

e60+ / e60+ PS

Supports large-format printers and provides extended functionality

Ideal for:

- Photographer and photo retailer
- Artists and Museum
- Retail and corporates
- Architects and Cartographer
- Public authorities, Institute
- Universities
- Advertising agencies and designer
- Booth builder and print service provider
- Military, and many more.

Reseller:

www.posterjet.com

Eisfeld Datentechnik GmbH & Co.KG

Hugo-Eckener-Str. 31 • 50829 Köln • Germany
Phone: +49 221 2920900 • Fax: +49 221 292090-88